



TIIG

INJURY SURVEILLANCE IN THE NORTH WEST OF ENGLAND

Injury attendances to Trafford General Hospital Emergency Department

October 2012 to September 2013

This report summarises recorded injury attendances to Trafford General Emergency Department (ED) between October 2012 and September 2013.

Between October 2012 and September 2013 there were 56,285 injury attendances to Trafford General ED. Females accounted for just over half (51%) of all injury attendances. The month with the highest injury attendances was July (n=5,357) with February (n=4,270) having the lowest attendances ([Figure 1](#)). The majority of attendances were recorded as other injury (93%). Sports injury accounted for 3% of all injury attendances and road traffic collisions (RTC) 2% ([Table 1](#)).

For all injuries the highest proportion of attendances were for persons aged 20 to 34 and 65 plus years (both 21%) ([Figure 2](#)). Over four in ten (42%) RTC attendees were aged 20 to 34 years. Almost half (49%) of sports injury attendees were aged 5 to 19 years ([Figure 3](#)).

[Table 2](#) shows the ethnicity of attendees to Trafford General ED. Almost nine in ten (87%) were white.

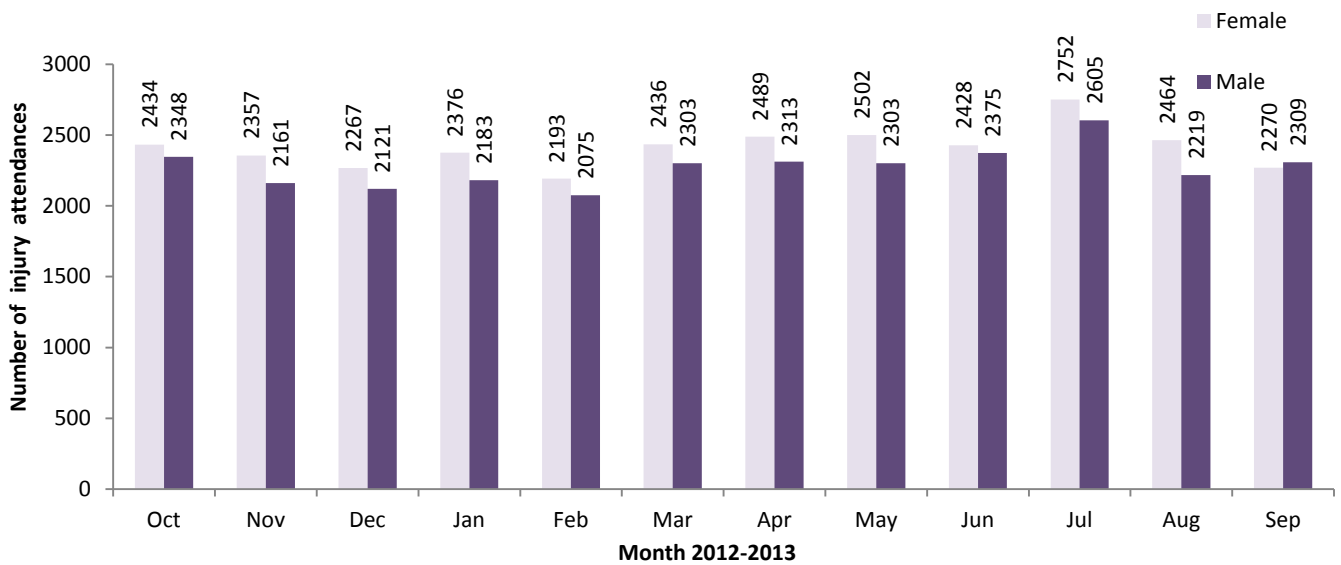
The disposal of a patient can give an indication of the severity of the injuries sustained. Almost two-fifths (39%) of attendees were discharged, a third (33%) were referred and 14% were admitted to hospital ([Table 3](#)). Over six in ten (62%) of RTC attendees were discharged. Over half (51%) of sports injury

attendees were discharged, while almost a third (32%) of deliberate self-harm (DSH) attendees were admitted ([Table 4](#)).

[Table 5](#) shows the arrival methods of attendances at Trafford General ED. Most (85%) of attendees arrived by other means, whilst 15% arrived by ambulance.

[Table 6](#) shows assault attendances to Trafford General ED. There were 522 assault attendances recorded between October 2012 and September 2013. Seven in ten (70%) were male, and over four in ten (44%) were aged 20 to 34 years. Almost a quarter (24%) of assault attendees arrived at the ED by ambulance.

Figure 1: Trafford General ED: Total injury attendances by gender and month, October 2012 to September 2013*



*There were two attendances where gender was recorded as unknown

Table 1: Trafford General ED: Total injury attendances by injury group and month, October 2012 to September 2013

Injury group	Oct	Nov	Dec	Jan	Feb	Mar	Apr	May	Jun	Jul	Aug	Sep	Total	%
Other injury	4434	4156	4124	4252	3955	4374	4459	4447	4465	5085	4420	4253	52424	93
Sports injury	166	157	74	122	151	178	186	166	153	130	90	162	1735	3
RTC	111	114	91	90	91	88	82	103	96	50	72	61	1049	2
DSH	36	45	46	44	30	36	41	63	52	53	53	56	555	1
Assault	35	46	53	51	43	63	34	26	37	39	48	47	522	1
Total	4782	4518	4388	4559	4270	4739	4802	4805	4803	5357	4683	4579	56285	100

Figure 2: Trafford General ED: Total injury attendances by age group and month, October 2012 to September 2013

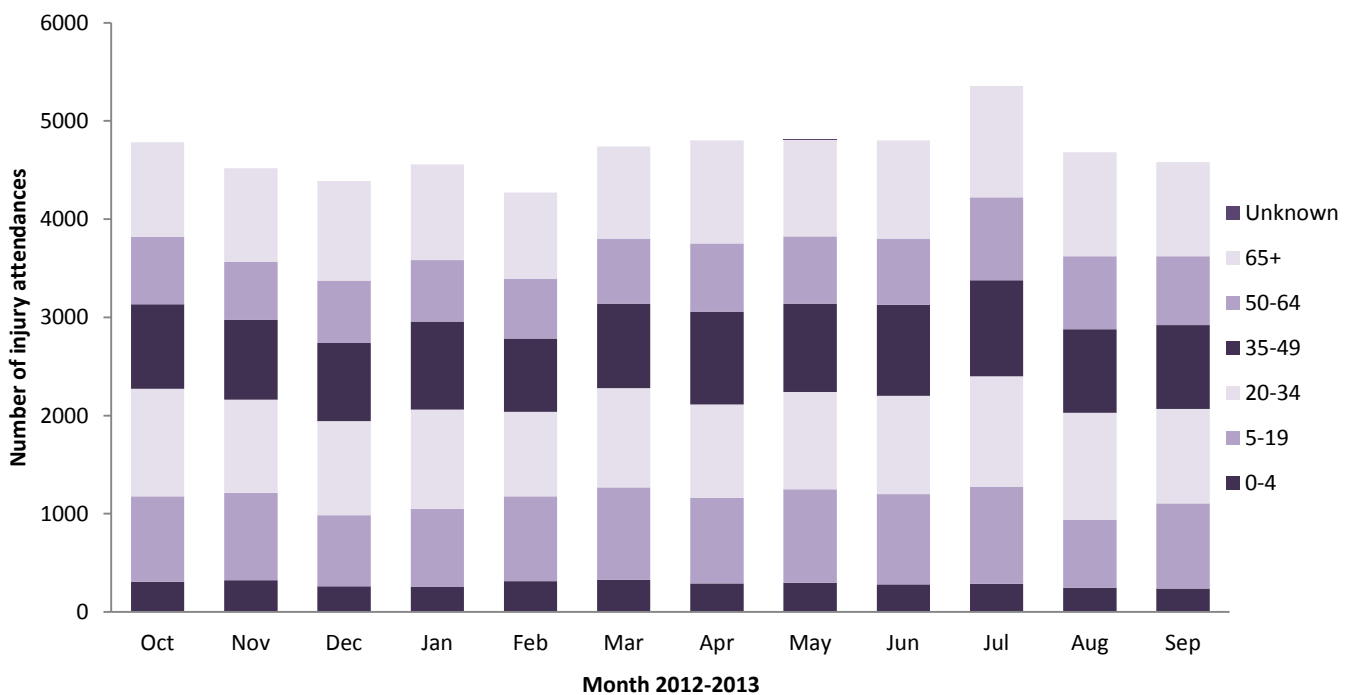


Figure 3: Trafford General ED: Total injury attendances by age group and injury group (excluding other injury), October 2012 to September 2013

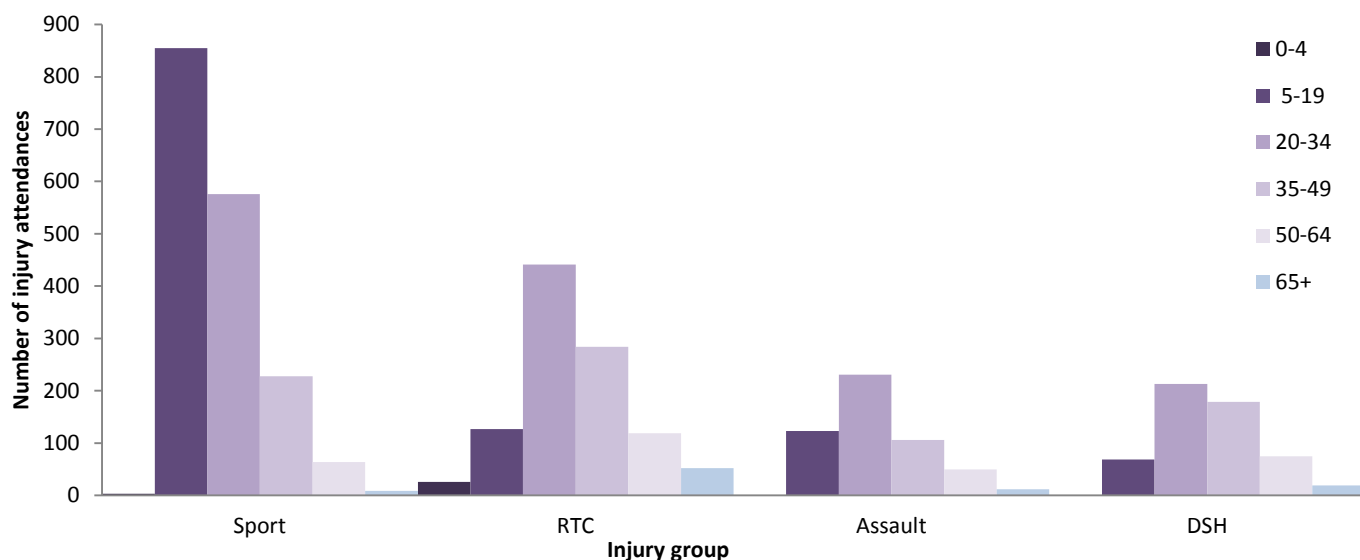


Table 2: Trafford General ED: Total injury attendances by ethnicity and month, October 2012 to September 2013^{1,2}

Ethnicity	Oct	Nov	Dec	Jan	Feb	Mar	Apr	May	Jun	Jul	Aug	Sep	Total	%
White	4163	3935	3816	3988	3747	4162	4207	4221	4203	4666	4081	4030	49219	87
Pakistani	124	125	130	138	86	116	110	121	125	145	130	107	1457	3
Mixed	83	90	81	63	84	76	91	100	79	109	83	89	1028	2
Black	77	91	69	72	74	80	78	89	112	117	82	72	1013	2
Not stated	88	67	72	77	71	81	87	95	79	68	75	73	933	2
Indian	87	79	82	69	78	64	87	68	66	108	58	64	910	2
Any other ethnic group	68	65	71	79	73	87	73	53	78	95	77	72	891	2
Asian other	42	30	28	33	20	34	30	16	18	17	34	20	322	1
Chinese	19	20	19	20	18	22	19	21	22	14	14	21	229	0
Not known	22	11	10	12	14	<15	15	15	14	<15	41	<30	209	0
Bangladeshi	9	5	10	8	5	***	5	6	7	***	8	***	74	0
Total	4782	4518	4388	4559	4270	4739	4802	4805	4803	5357	4683	4579	56285	100

Table 3: Trafford General ED: Total injury attendances by method of disposal and month, October 2012 to September 2013³

Disposal	Oct	Nov	Dec	Jan	Feb	Mar	Apr	May	Jun	Jul	Aug	Sep	Total	%
Discharged	2039	1932	1775	1612	1562	1738	1743	1766	1930	2139	1864	1908	22008	39
Referral/follow-up	1470	1361	1404	1681	1518	1593	1732	1675	1629	1749	1523	1451	18786	33
Admitted	614	640	661	667	619	713	707	667	641	696	647	635	7907	14
Other	659	585	548	599	571	695	620	697	603	773	649	585	7584	13
Total	4782	4518	4388	4559	4270	4739	4802	4805	4803	5357	4683	4579	56285	100

¹ Please note that all numbers less than five have been suppressed in line with patient confidentiality and if there is only one number <5 in a category then two numbers will be suppressed at the next level.

² White=Irish, British, other white background; Mixed = white and black, white and Asian, mixed any other; Black=African, Caribbean, other black.

³ Admitted=admitted to hospital/became a lodged patient of the same health care provider; Discharged=discharged - did not require any follow up treatment; Referral/follow-up=discharged - follow up treatment to be provided by GP, referred to ED clinic, referred to fracture clinic, referred to other out-patient clinic, referred to other health care professional; Other=died in department, left department before being treated, left department having refused treatment, other.

Table 4: Trafford General ED: Total injury attendances by method of disposal and injury group (excluding other injury), October 2012 to September 2013

Disposal	Assault		DSH		RTC		Sports injury		Total	
	n	%	n	%	n	%	n	%	n	%
Discharged	243	47	43	8	651	62	889	51	1826	47
Referral/follow-up	167	32	37	7	304	29	652	38	1160	30
Admitted	19	4	180	32	16	2	7	0	222	6
Other	93	18	295	53	78	7	187	11	653	17
Total	522	100	555	100	1049	100	1735	100	3861	100

Table 5: Trafford General ED: Total injury attendances by mode of arrival and month, October 2012 to September 2013

Arrival mode	Oct	Nov	Dec	Jan	Feb	Mar	Apr	May	Jun	Jul	Aug	Sep	Total	%
Other	4090	3825	3660	3821	3681	4033	4051	4090	4172	4672	3980	3938	48013	85
Ambulance	692	693	728	738	589	706	751	715	631	685	703	641	8272	15
Total	4782	4518	4388	4559	4270	4739	4802	4805	4803	5357	4683	4579	56285	100

Table 6: Trafford General Hospital ED: Assault attendances by gender, mode of arrival and age group, October 2012 to September 2013

Injury type	Assault attendees (n=522)		All injuries % (n=56,285)
	n	%	%
Gender			
Female	157	30	51
Male	365	70	49
Arrival mode			
Ambulance	124	24	15
Other	398	76	85
Age group			
0 - 4	0	0	6
5 - 19	123	24	18
20 - 34	231	44	21
35 - 49	106	20	19
50 - 64	50	10	14
65 plus	12	2	21

Published November 2013

Jennifer Brizell (TIIG researcher)

Centre for Public Health, Faculty of Education, Health and Community, Liverpool John Moores University
2nd Floor, Henry Cotton Campus, 15-21 Webster Street, Liverpool, L3 2ET

Tel: 0151 231 4500 Email: j.s.brizell@ljmu.ac.uk

Website: www.tiig.info (please note all data requests should be made through the TIIG website)

Twitter: @TIIG_CPH